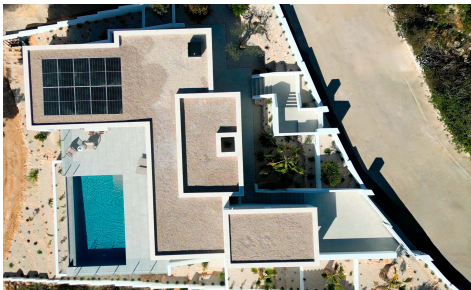


LAS412261681



Villa in Benitachell

€1,300,000



4



5



215m²



813m²



Located in the prestigious residential area of Cumbre del Sol, this elegant villa combines contemporary architecture with a strong connection to the Mediterranean surroundings and native vegetation, offering open views and a desirable southwest orientation. It is designed to maximise light, space and the connection between indoor and outdoor areas. The property is distributed over two levels, with the main living area located entirely on the upper floor, offering the convenience of single-level living. This level includes three double bedrooms, one of them with en-suite bathroom and direct access to the terrace. The living room, dining area and kitchen are arranged in an open-plan layout with generous proportions and direct (Ask for More Details!)